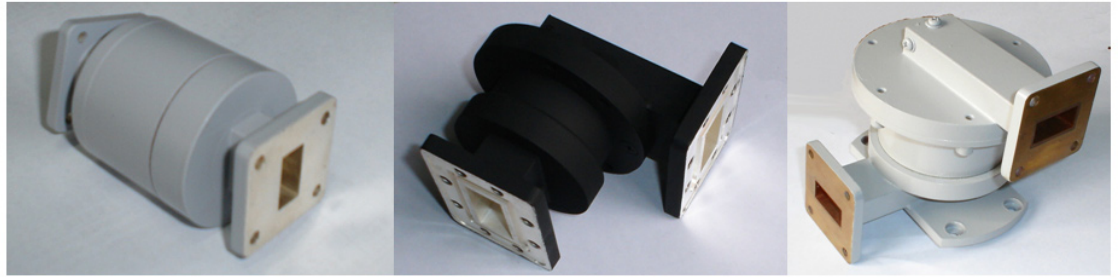


## 10 Waveguide Single Channel Rotary Joint

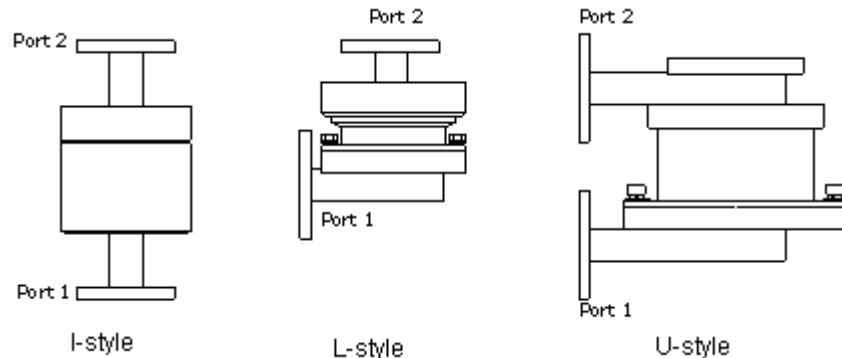


Rotary Joints (rotary couplers) are used to transmit microwave energy from stationary lines to rotating lines. The rotary joint is an electro-mechanical device with RF performance dependent upon rigorous electrical and mechanical design. Available styles are defined by physical geometry as follows:

I-style - Two in-line arms both collinear with the axis of rotation.

L-style - One arm is perpendicular to the axis of rotation.

U-style - Both arms are perpendicular to the axis of rotation.



### 【Specifications】

Model No	Freq Range (GHz)	Operating Bandwidth (MHz)	VSWR (Max)	VSWR WOW	IL(dB) (Max)	IL WOW (dB)	WG Type		Material
							IEC	EIA	
VT32WRJI	2.60-3.95	200	1.20	0.05	0.3	0.1	R32	WR284	Al/Cu
VT32WRJL	2.60-3.95	200	1.20	0.05	0.3	0.1	R32	WR284	Al/Cu
VT32WRJU	2.60-3.95	200	1.20	0.05	0.3	0.1	R32	WR284	Al/Cu
VT40WRJI	3.22-4.90	200	1.20	0.05	0.3	0.1	R40	WR229	Al/Cu
VT40WRJL	3.22-4.90	200	1.20	0.05	0.3	0.1	R40	WR229	Al/Cu
VT40WRJU	3.22-4.90	200	1.20	0.05	0.3	0.1	R40	WR229	Al/Cu
VT48WRJI	3.94-5.99	200	1.20	0.05	0.3	0.1	R48	WR187	Al/Cu
VT48WRJL	3.94-5.99	200	1.20	0.05	0.3	0.1	R48	WR187	Al/Cu
VT48WRJU	3.94-5.99	200	1.20	0.05	0.3	0.1	R48	WR187	Al/Cu
VT58WRJI	4.64-7.05	300	1.25	0.05	0.25	0.1	R58	WR159	Al/Cu
VT58WRJL	4.64-7.05	300	1.25	0.05	0.25	0.1	R58	WR159	Al/Cu
VT58WRJU	4.64-7.05	300	1.25	0.05	0.25	0.1	R58	WR159	Al/Cu

# 10 Waveguide Single Channel Rotary Joint





Vector Telecom

Section 1

**Waveguide Components**

**10**

**Waveguide Single Channel Rotary Joint**



Vector Telecom Pty Ltd

Website: [www.vectortele.com](http://www.vectortele.com)  
Email: [sales@vectortele.com](mailto:sales@vectortele.com)

Model No	Freq Range (GHz)	Operating Bandwidth (MHz)	VSWR (Max)	VSWR WOW	IL(dB) (Max)	IL(dB) WOW	WG Type		Material
							IEC	EIA	
VT70WRJI	5.38-8.17	700	1.25	0.05	0.25	0.1	R70	WR137	Al/Cu
VT70WRJL	5.38-8.17	700	1.25	0.05	0.25	0.1	R70	WR137	Al/Cu
VT70WRJU	5.38-8.17	700	1.25	0.05	0.25	0.1	R70	WR137	Al/Cu
VT84WRJI	6.57-9.99	300	1.20	0.05	0.3	0.1	R84	WR112	Al/Cu
VT84WRJL	6.57-9.99	300	1.20	0.05	0.3	0.1	R84	WR112	Al/Cu
VT84WRJU	6.57-9.99	300	1.20	0.05	0.3	0.1	R84	WR112	Al/Cu
VT100WRJI	8.20-12.4	300	1.20	0.05	0.3	0.1	R100	WR90	Al/Cu
VT100WRJL	8.20-12.4	300	1.20	0.05	0.3	0.1	R100	WR90	Al/Cu
VT100WRJU	8.20-12.4	300	1.20	0.05	0.3	0.1	R100	WR90	Al/Cu
VT120WRJI	9.84-15.0	500	1.25	0.05	0.3	0.1	R120	WR75	Al/Cu
VT120WRJL	9.84-15.0	500	1.25	0.05	0.3	0.1	R120	WR75	Al/Cu
VT120WRJU	9.84-15.0	500	1.25	0.05	0.3	0.1	R120	WR75	Al/Cu
VT140WRJI	11.9-18.0	1000	1.3	0.05	0.4	0.1	R140	WR62	Al/Cu
VT140WRJL	11.9-18.0	1000	1.3	0.05	0.4	0.1	R140	WR62	Al/Cu
VT140WRJU	11.9-18.0	1000	1.3	0.05	0.4	0.1	R140	WR62	Al/Cu
VT180WRJI	14.5-22.0	1000	1.3	0.05	0.4	0.1	R180	WR51	Al/Cu
VT180WRJL	14.5-22.0	1000	1.3	0.05	0.4	0.1	R180	WR51	Al/Cu
VT180WRJU	14.5-22.0	1000	1.3	0.05	0.4	0.1	R180	WR51	Al/Cu
VT220WRJI	17.6-26.7	2000	1.4	0.05	1.0	0.1	R220	WR42	Al/Cu
VT220WRJL	17.6-26.7	2000	1.4	0.05	1.0	0.1	R220	WR42	Al/Cu
VT220WRJU	17.6-26.7	2000	1.4	0.05	1.0	0.1	R220	WR42	Al/Cu
VT260WRJI	21.7-33.0	2000	1.4	0.05	1.0	0.1	R260	WR34	Al/Cu
VT260WRJL	21.7-33.0	2000	1.4	0.05	1.0	0.1	R260	WR34	Al/Cu
VT260WRJU	21.7-33.0	2000	1.4	0.05	1.0	0.1	R260	WR28	Al/Cu
VT320WRJI	26.3-40.0	2000	1.4	0.05	1.0	0.1	R320	WR28	Al/Cu
VT320WRJL	26.3-40.0	2000	1.4	0.05	1.0	0.1	R320	WR28	Al/Cu
VT320WRJU	26.3-40.0	2000	1.4	0.05	1.0	0.1	R320	WR28	Al/Cu

**【Ordering Information】**

**Example Part No:** VT 100 WRJL P M A

Vector Telecom ————  
 WG Type: R100 ————  
 Product Type: Rotary Joint ————  
                   WRJI (I-style),  
                   WRJL (L-style),  
                   WRJU (U-style)

Material: A=Aluminum C=Copper  
 Port 2 Flange Type: FBM  
 Port 1 Flange Type: FBP

- Flange type: Multiple types available - see VT Flanges page
- Finish: Corrosion protection plus black top coat