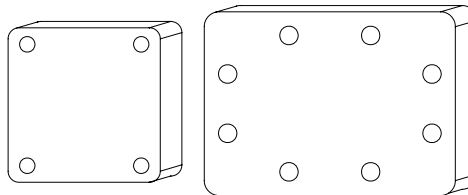


## 13 Waveguide Short

Vector Telecom offers a standard product line of waveguide short plates which provide high reflection short circuits for terminating all standard waveguides. Vector Telecom offers a cover, all-clear configuration as a standard product. Alternate materials and configurations are available upon request.

### 13.1 Waveguide Short Plate



# 13

## Waveguide Short



Vector Telecom Pty Ltd

Website: [www.vectortele.com](http://www.vectortele.com)  
 Email: [sales@vectortele.com](mailto:sales@vectortele.com)

#### 【Specifications】

Model No*	Freq Range (GHz)	VSWR (Min)	Thickness (mm)	WG Type		Flange	Material
				IEC	EIA		
VT3WS...	0.32-0.49	60	23	R3	WR2300	FDP	Al
VT4WS...	0.35-0.53	60	23	R4	WR2100	FDP	Al
VT5WS...	0.41-0.62	60	18	R5	WR1800	FDP	Al
VT6WS...	0.49-0.75	60	18	R6	WR1500	FDP	Al
VT8WS...	0.64-0.98	60	14	R8	WR1150	FDP	Al
VT9WS...	0.75-1.15	60	14	R9	WR975	FDP	Al
VT12WS...	0.96-1.46	60	12	R12	WR770	FDP	Al
VT14WS...	1.13-1.73	60	12	R14	WR650	FDP	Al
VT18WS...	1.45-2.20	60	12	R18	WR510	FDP	Al/Cu
VT22WS...	1.72-2.61	60	10	R22	WR430	FDP	Al/Cu
VT26WS...	2.17-3.30	60	10	R26	WR340	FDP	Al/Cu
VT32WS...	2.60-3.95	60	8	R32	WR284	FDP	Al/Cu
VT40WS...	3.22-4.90	60	8	R40	WR229	FDP	Al/Cu



Model No*	Freq Range (GHz)	VSWR (Min)	Thickness (mm)	WG Type		Flange	Material
				IEC	EIA		
VT48WS...	3.94-5.99	60	7	R48	WR187	FDP	Al/Cu
VT58WS...	4.64-7.05	60	7	R58	WR159	FDP	Al/Cu
VT70WS...	5.38-8.17	60	7	R70	WR137	FDP	Al/Cu
VT84WS...	6.57-9.99	60	5	R84	WR112	FBP	Al/Cu
VT100WS...	8.20-12.40	60	5	R100	WR90	FBP	Al/Cu
VT120WS...	9.84-15.0	60	5	R120	WR75	FBP	Al/Cu
VT140WS...	11.9-18.0	60	5	R140	WR62	FBP	Al/Cu
VT180WS...	14.5-22.0	60	5	R180	WR51	FBP	Al/Cu
VT220WS...	17.6-26.7	60	4	R220	WR42	FBP	Al/Cu
VT260WS...	21.7-33.0	60	4	R260	WR34	FBP	Al/Cu
VT320WS...	26.3-40.0	60	4	R320	WR28	FBP	Al/Cu
VT400WS...	32.9-50.1	60	4	R400	WR22	FUGP	Cu
VT500WS...	39.2-59.6	60	4	R500	WR19	FUGP	Cu
VT620WS...	49.8-75.8	60	4	R620	WR15	FUGP	Cu
VT740WS...	60.5-91.9	60	4	R740	WR12	FUGP	Cu
VT900WS...	73.8-112	60	4	R900	WR10	FUGP	Cu

\*Indicates Model Number. See Ordering Information for complete part number.

**【Ordering Information】**

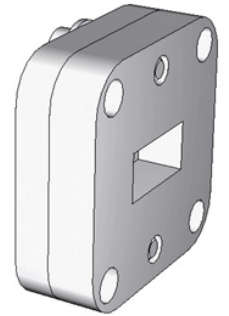
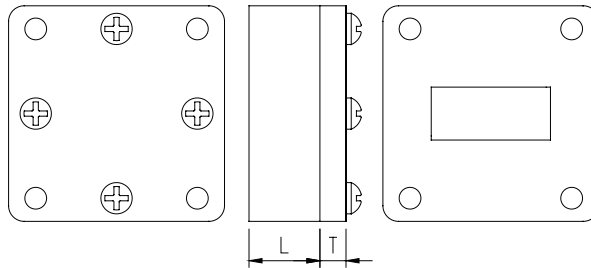
**Example Part No:** VT 100 WS A  
 Vector Telecom \_\_\_\_\_  
 WG Type: R100 \_\_\_\_\_  
 Material: A=Aluminum C=Copper  
 Product Type: Waveguide Short

- Flange type: Multiple types available - see VT Flanges page
- Finish: Corrosion protection plus black top coat



### 13.2 Waveguide Offset Short

Waveguide offset shorts are available on special order. These are designed to have a specific shorting distance as required.



### 13.3 Waveguide Sliding Short

Waveguide sliding shorts are available. Please consult sales engineer for more information.

